

Partnership for Safe Water

Pennsylvania American Water has received recognition through the **Partnership for Safe Water** for outstanding commitment to delivering superior quality drinking water to customers.



Learn more

Learn more about source water protection programs in your area and how you can protect and preserve water supplies.

Pennsylvania American Water
pennsylvaniaamwater.com

SourcewaterPA
sourcewaterpa.org

PA Department of Environmental Protection
dep.pa.gov

USEPA Pollution Prevention & Control
water.epa.gov/polwaste



**PENNSYLVANIA
AMERICAN WATER**

pennsylvaniaamwater.com    



10 WAYS to protect our watersheds

(and your drinking water)



**PENNSYLVANIA
AMERICAN WATER**

WE ALL LIVE IN A WATERSHED

Watersheds are areas of land that drain into a lake, river or stream. As water travels over the land's surface—through farm fields, forests, lawns and city streets—it's impacted by what happens in the watershed. In Pennsylvania, many waterways serve as sources of community drinking water supplies, so it's important that we all take steps to protect and improve this precious natural resource.

Your yard is part of a watershed. Here's what you can do to help protect your watershed.

Service your septic system. Have your septic tank pumped and septic system inspected regularly – usually every 3-5 years.

Clean up after your pets. Animal waste may contain harmful organisms such as Giardia, Salmonella and E. coli.

Limit the use of fertilizers and avoid pesticides. Consider natural alternatives.

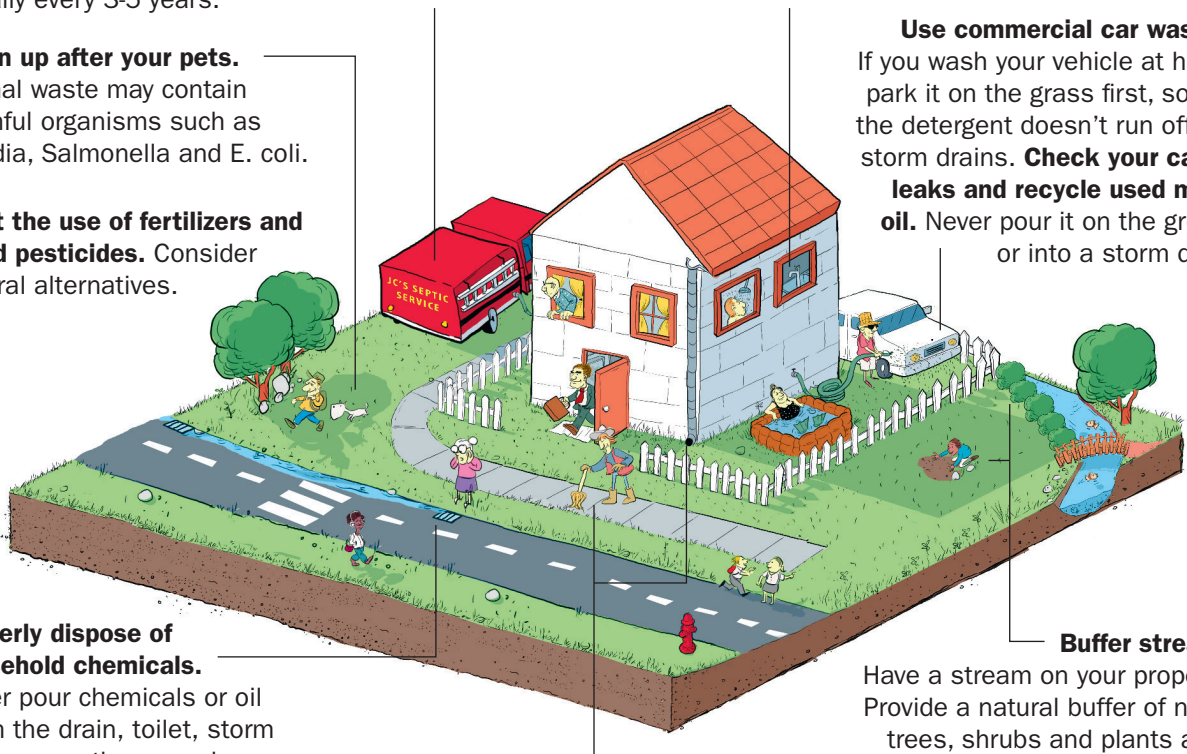
Properly dispose of household chemicals. Never pour chemicals or oil down the drain, toilet, storm drains or on the ground. Dispose of pharmaceuticals, vehicle batteries, household chemicals, oils, and paints at proper waste collection sites.

Prevent chemicals from reaching storm drains. Sweep sidewalks and driveways instead of using a hose. Direct downspouts onto lawns and away from paved surfaces (or add a rain barrel to save water for later use).

Select non- or less toxic household cleaning products. Use phosphate-free detergents.

Use commercial car washes. If you wash your vehicle at home, park it on the grass first, so that the detergent doesn't run off into storm drains. **Check your car for leaks and recycle used motor oil.** Never pour it on the ground or into a storm drain.

Buffer streams. Have a stream on your property? Provide a natural buffer of native trees, shrubs and plants along its banks to filter storm water runoff. Plant grass on the bare spots in your yard.



If you see something, say something.

Report any spills, illegal dumping or suspicious activity to the Department of Environmental Protection. For a listing of DEP's regional 24-hour phone lines, visit www.dep.pa.gov/About/ReportanIncident/Pages/default.aspx.